

STOECHIOL

TO SMOOTH LINES AROUND THE LIPS
TO REDEFINE THE MOUTH

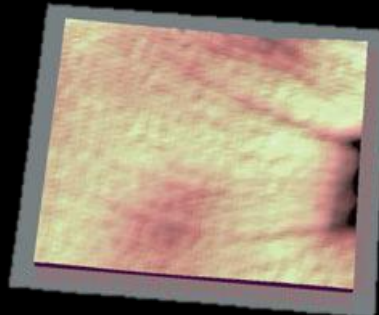
It acts as a natural botox like ingredient that reversibly inhibits muscle contractions within 2h till 24h. It stimulates cellular division and improves skin cohesion to rebuild the epidermis in depth. As an epidermal tape, Stoechiol immobilizes wrinkles and smoothes the skin.

IN VIVO TEST:

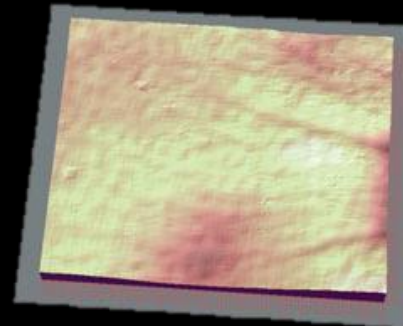
Protocol: 20 volunteers aged 46 to 59. Stoechiol 0,25% and 1% - Applied twice a day for 7 days on the crow's foot wrinkles. Measurement of the depth of the main wrinkle (Spt parameter) and the roughness of the skin (Spa parameter) by fringe projection, 1h and 24h after the first application and 7 days after the end of treatment (14th day).

Stoechiol decreases wrinkles in depth and smoothes the skin within 24h :

- 17% of wrinkle depth within 24h
- 12% of skin roughness within 24h



Before treatment



After 24 hours



CLAIMS

Immobilize &
smooth wrinkles
Redefine the
mouth

CHARACTERISTICS

% of use : 0.25%

CODIF
R&N

STOECHOLIOL ORIGIN

Stoechiol is an oil extracted from *Lavandula stoechas* by CO₂ subcritical extraction.

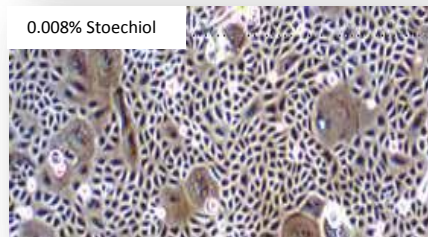
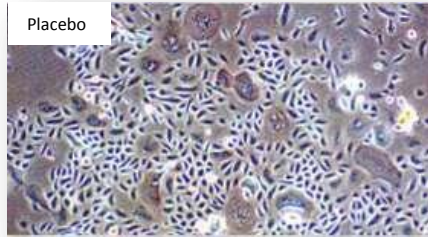
This specie of lavender has developed « false flowers » in the shape of butterfly to attract pollinating insects and thus ensure its survival.



IN VITRO TEST : REDENSIFIES & RESTRUCTURES

Protocol: Culture of keratinocytes incubated for 8 days with Stoechiol diluted to 0.008% in the culture medium. Optical microscopic observation of the corneocytic links.

Stoechiol stimulates the division of keratinocytes in the basal layer to restore the density of the epidermis. It also stimulates the expression of adhesion proteins responsible for the cohesion and structure of the epidermis.

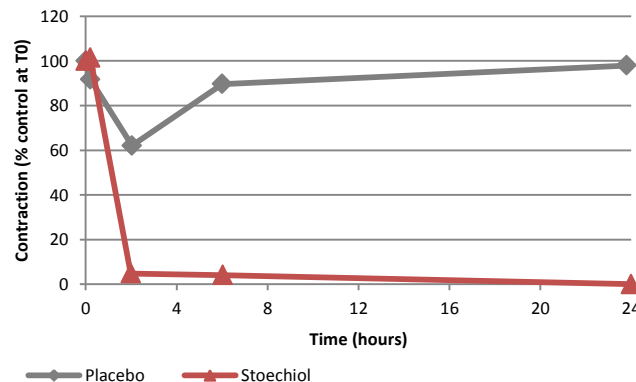


STOECHOLIOL REBUILD THE EPIDERMIS IN DEPTH.

IN VITRO TEST: "BOTOX LIKE" EFFECT

Protocol : the relaxing effect of Stoechiol was assessed on the frequency of contraction of a contractile culture (co-culture of motoneurone on a monolayer of muscle cells). The model was first validated using a known contractile inhibitor : carisoprodol.

Stoechiol acts as an epidermal tape for expression lines and reversibly blocks muscle contractions within 2h until 24h.



CODIF
R&N

INCI
Caprylic/capric Triglyceride (and)
Lavandula stoechas

CONTACT

CODIF RECHERCHE ET NATURE
70, rue du Commandant l'Herminier
BP11709 - 35417 Saint-Malo cedex
FRANCE

Tel : +33-2-23-18-31-07

Fax : +33-2-23-18-31-01

infotech@codif-recherche-et-nature.com

www.codif-recherche-et-nature.com



MAKE - UP ACTIVE INGREDIENT