

EPS SEAMAT P – EPS SEAMAT P ATO

MATTIFIES WITHOUT DEHYDRATING
FIGHTS AGAINST INFLAMMATION

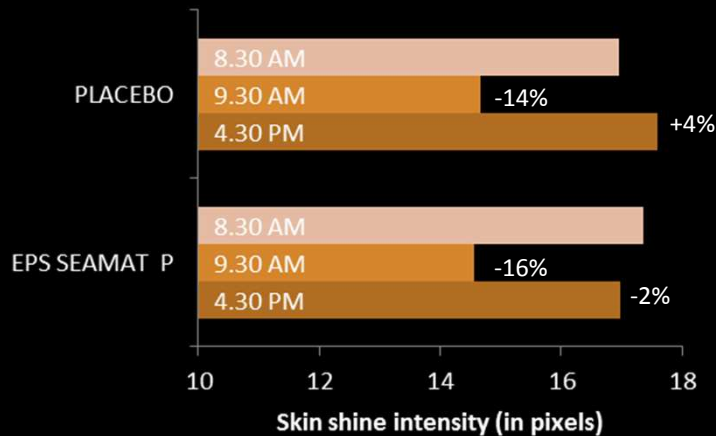
EPS SEAMAT P absorbs excess sebum on skin surface for an immediate mattifying effect till the end of the day. Non aggressive, it respects the nature of oily and combination skins and reinforces their initial hydration level. Its anti-inflammatory properties give it multiple benefits for sensitive skins.

IN-VIVO TEST: EFFECT OF EPS SEAMAT P ON SKIN SHINE

Protocol : 16 volunteers with oily and shiny skins. Analysis of skin shine using cross and uncross polarized photography. Single application of 2% EPS SEAMAT P at 8.30 AM.

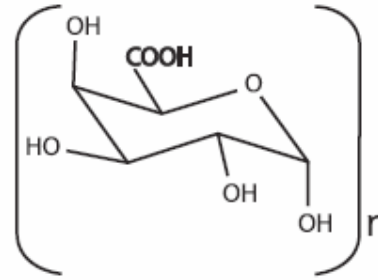
SKIN SHINE VARIATION OF THE WHOLE FACE.

EPS SEAMAT P decreases skin shine with a mattifying effect visible within 1H and till 8H after a single application. With EPS SEAMAT P, the skin shine observed at the end of the day is lower than thus observed the morning before application.



DESCRIPTION OF EPS SEAMAT P

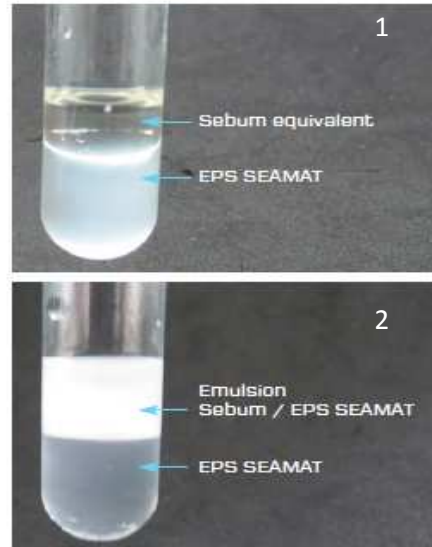
EPS SEAMAT P is a Marine Exopolysaccharide purified and totally characterized. It is mainly composed of galacturonic acid and has a molecular weight superior to 1.4 millions Dalton. Its high molecular weight gives it a specific affinity for the skin and surface properties interesting for the treatment of greasy skins.



VISUALIZATION OF EPS SEAMAT P CAPACITIES TO ABSORB SEBUM

Picture 1 shows a mix of sebum equivalent and EPS SEAMAT before emulsion. Oily, the sebum remains at the surface of the mixture.

Picture 2 has been taken after emulsion and highlights the capacities of EPS SEAMAT to emulsify the sebum equivalent. The sebum is absorbed and trapped by EPS SEAMAT P.



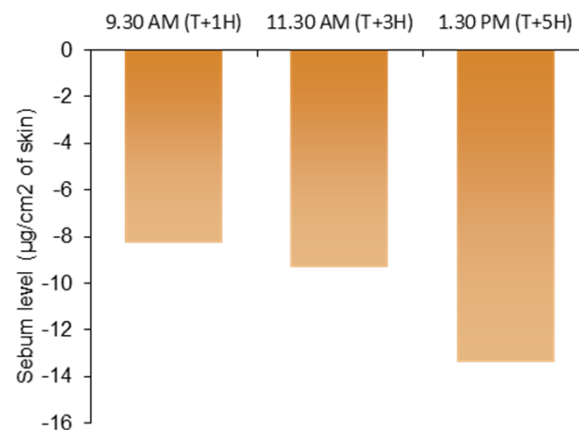
IN-VIVO TEST : EFFECT OF EPS SEAMAT P ON THE QUANTITY OF SEBUM MEASURABLE ON THE SURFACE OF THE SKIN

Protocol: 12 volunteers with either combination or oily skin. Sebum level evaluated with a sebumeter. Single application of 2% EPS SEAMAT at 8.30 am.

Application of EPS SEAMAT masks the amount of sebum on the surface of the skin. This is explained by capacity of EPS SEAMAT to absorb and to trap the sebum.

EVEN THOUGH THE NATURAL PRODUCTION OF SEBUM DOUBLES BY MIDDAY, A SINGLE APPLICATION OF EPS SEAMAT IS SUFFICIENT TO ABSORB THE EXCESS OF SEBUM AND PRODUCE ANTI-SHINE RESULTS 1 HOUR AFTER APPLICATION.

Variation of sebum level versus untreated skin



CODIF
R&N

INCI

EPS SEAMAT P
Water (and) Plankton extract (and)
Phenoxyethanol

EPS SEAMAT P ATO
Maltodextrin (and) Plankton extract (and)
Phenoxyethanol

CONTACT

CODIF RECHERCHE ET NATURE
70, rue du Commandant l'Herminier
CS11789 - 35417 Saint-Malo cedex
FRANCE

Tel : +33-2-23-18-31-07

Fax : +33-2-23-18-31-01

infotech@codif-recherche-et-nature.com

www.codif-recherche-et-nature.com



MAKE - UP ACTIVE INGREDIENT